

Intersection Turning Movement Diagram

- LEGEND:**
- ▬▬▬ Track
 - ▬▬▬ Retaining Wall
 - ▬▬▬ Right-of-Way
 - ▬▬▬ Roadway Modifications
 - ▬▬▬ Ped/Bike Ramps & Sidewalks
 - ▬▬▬ Structure
 - ▬▬▬ Direction of Traffic

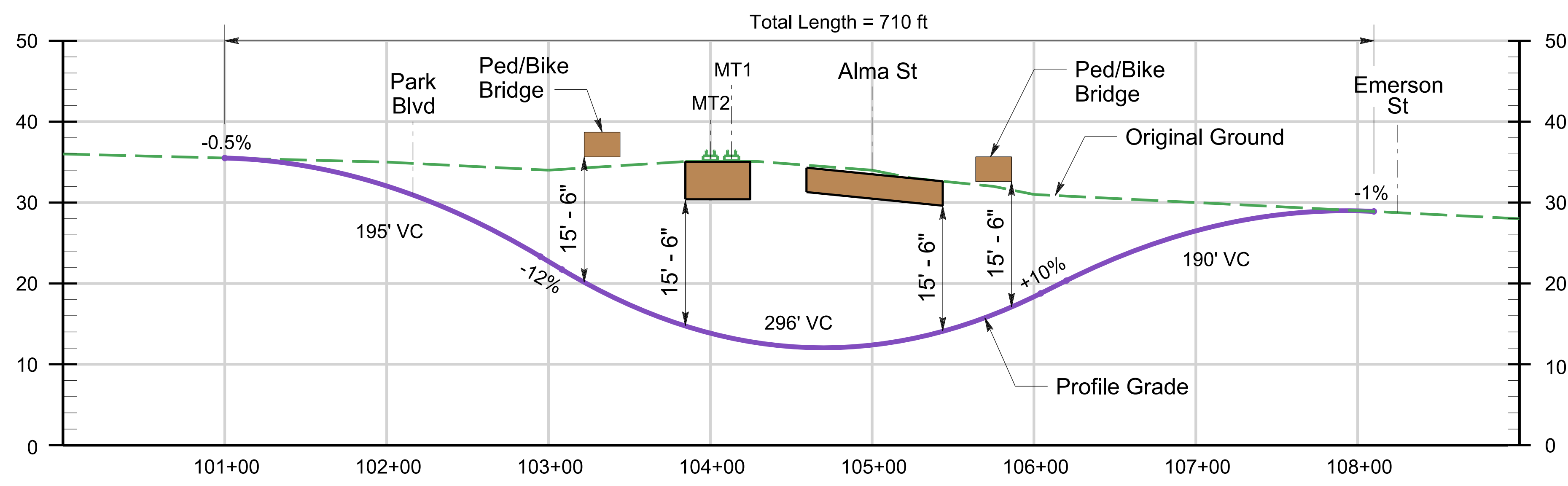
NOTE:
 Additional features at crosswalks, such as HAWK traffic signals and rectangular rapid flashing beacons, to be considered in future phases.

Meadow Drive Aerial View (Plan)

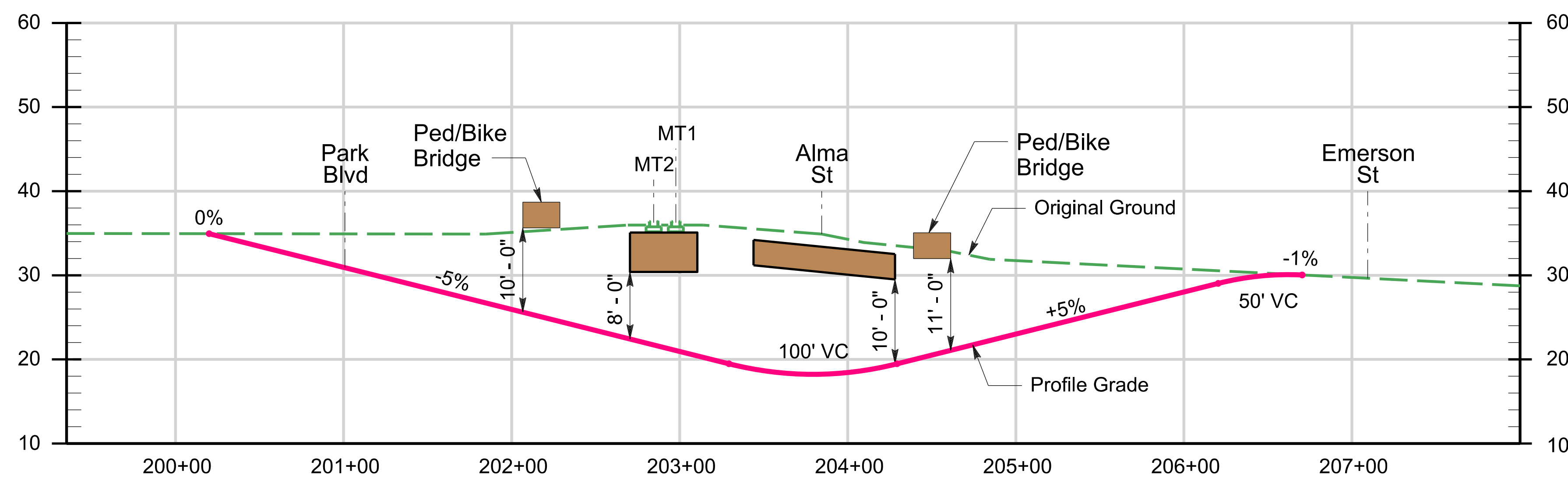
PRELIMINARY
 FOR DISCUSSION PURPOSES ONLY

**Palo Alto Grade Separation Planning Study
 Meadow Underpass**

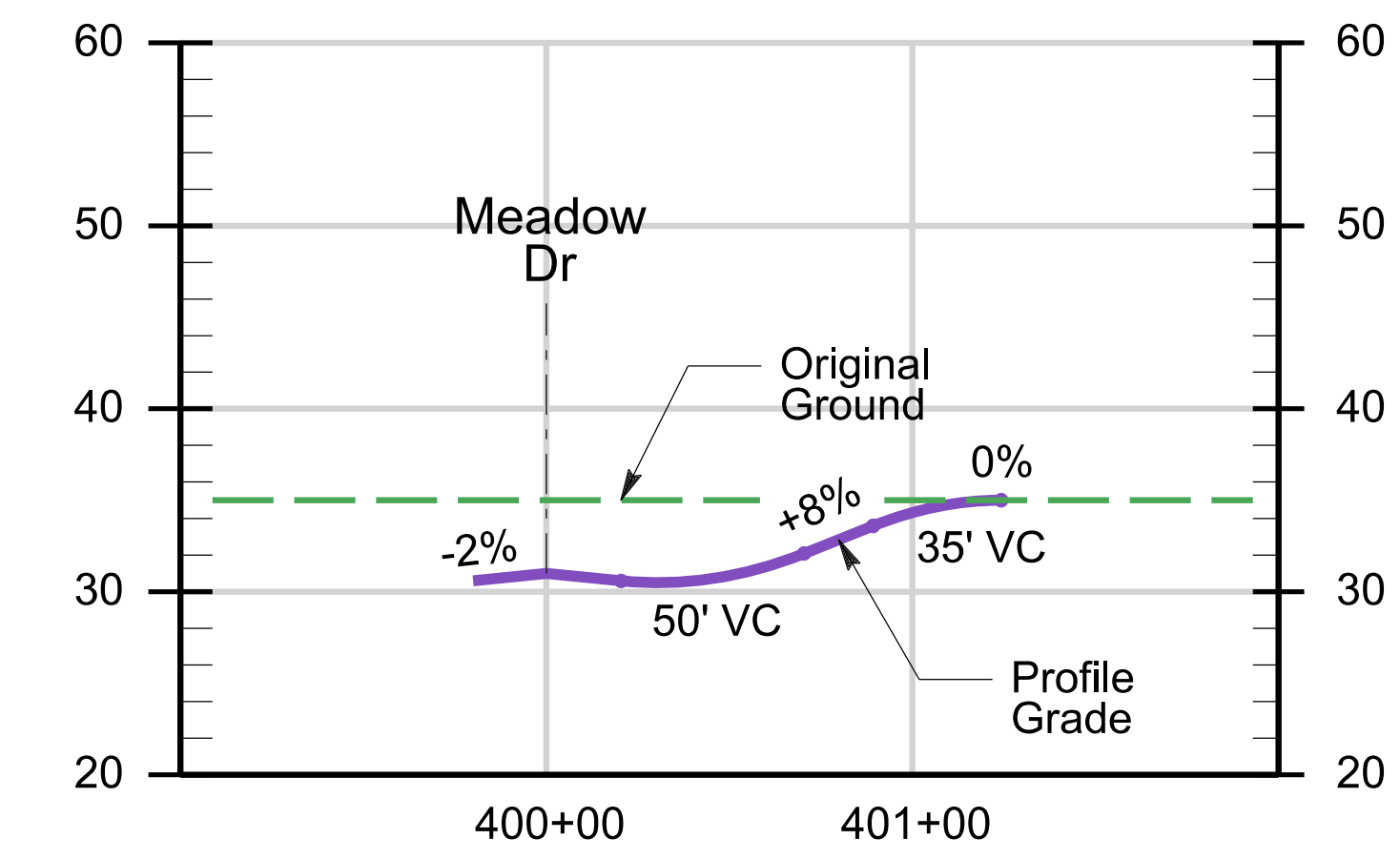




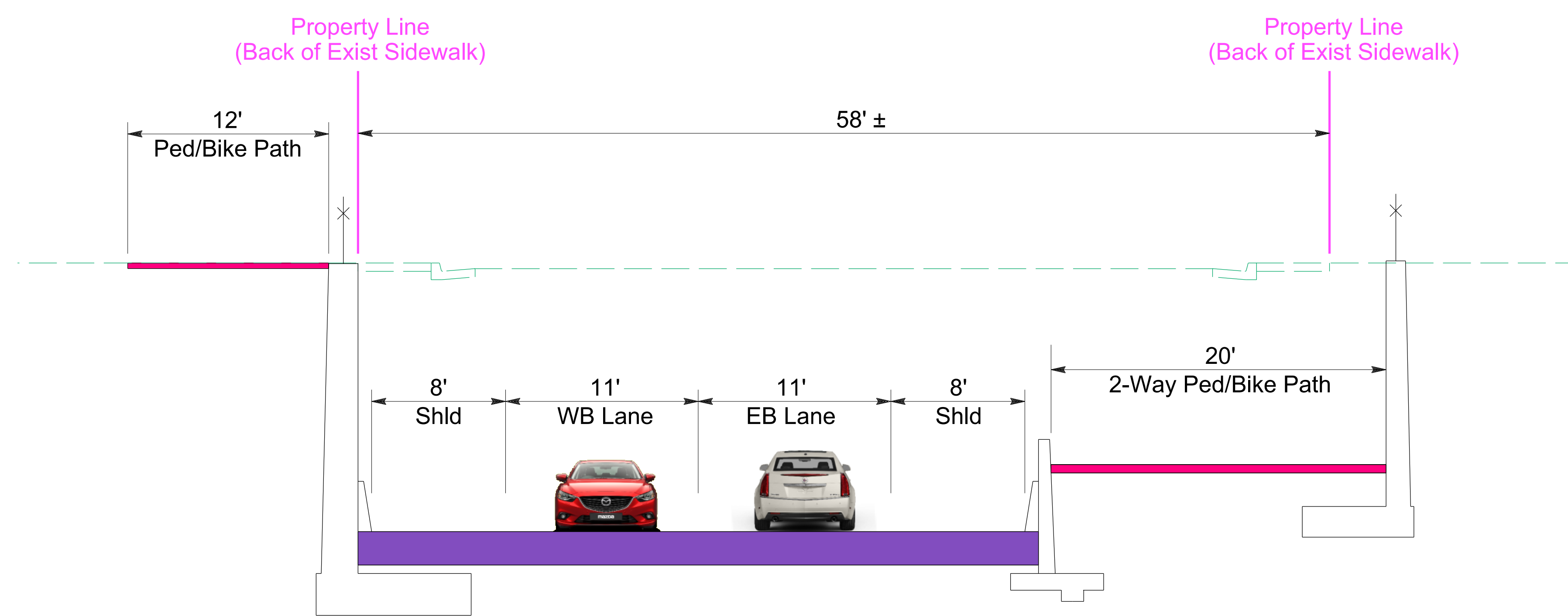
Meadow Dr Profile



Ped/Bike Profile from Park Blvd to Emerson St



**Park Blvd Profile
(North Side of Meadow Dr)**

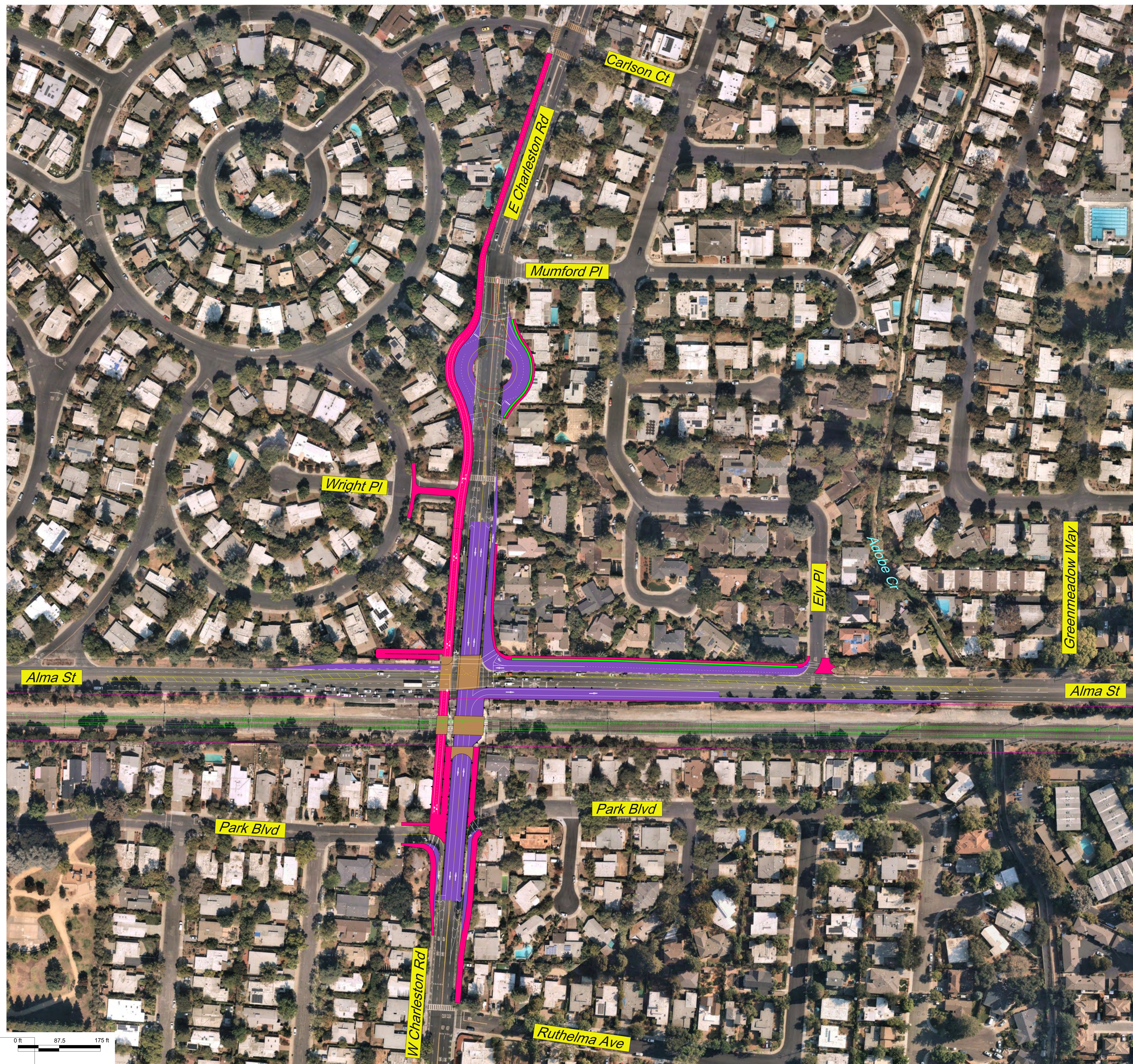


**Typical Section
Meadow Dr Underpass**

PRELIMINARY
FOR DISCUSSION PURPOSES ONLY

**Meadow Dr Underpass
Profiles & Typical Section**

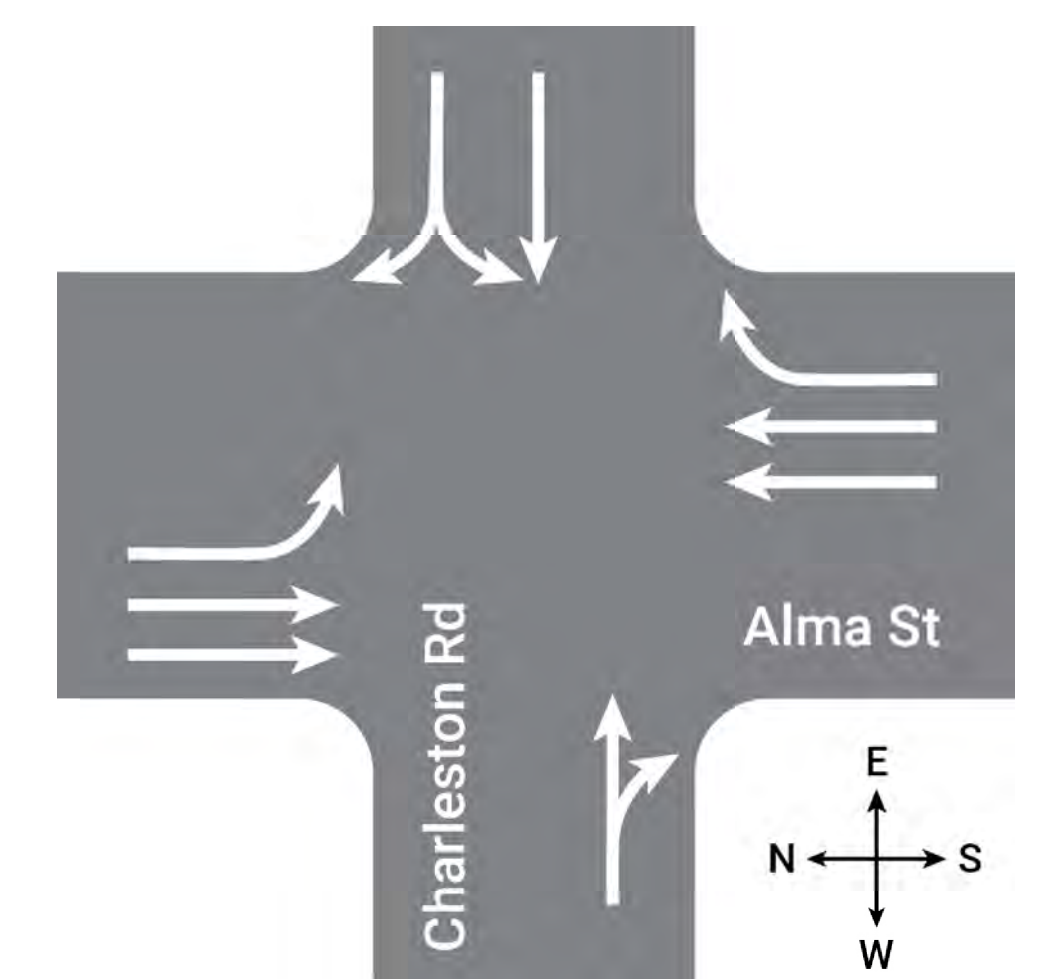




- LEGEND:**
- Track
 - Retaining Wall
 - Right-of-Way
 - Roadway Modifications
 - Ped/Bike Ramps & Sidewalks
 - Structure
 - Planting Area
 - Direction of Traffic

Charleston Road Aerial View (Plan)

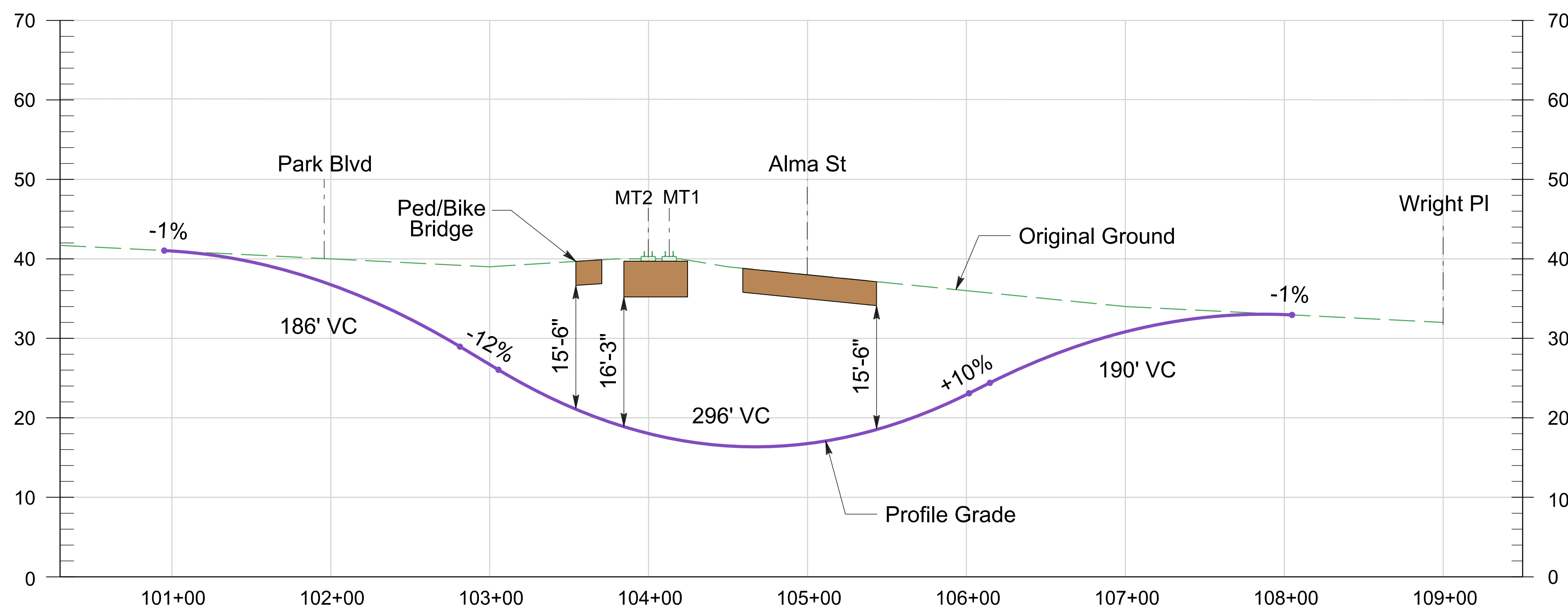
**Palo Alto Grade Separation Planning Study
Charleston Underpass**



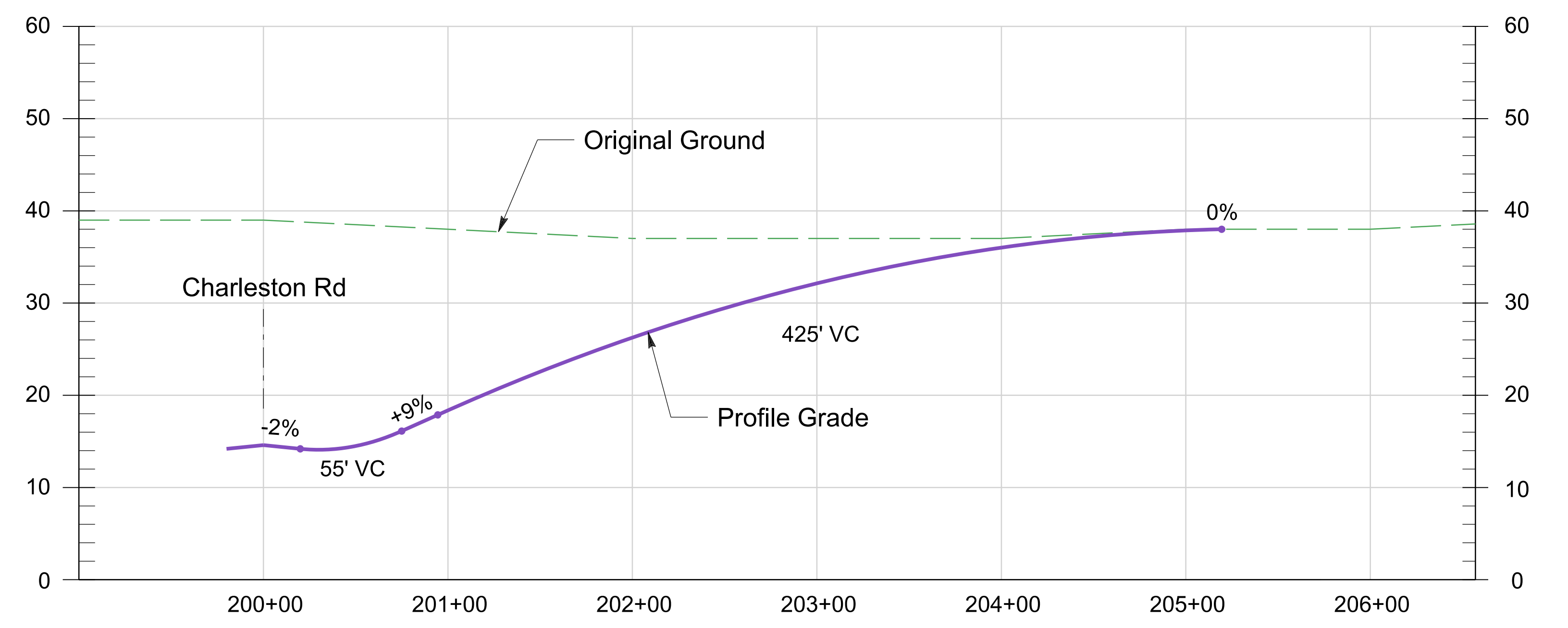
Intersection Turning Movement Diagram

PRELIMINARY
FOR DISCUSSION PURPOSES ONLY

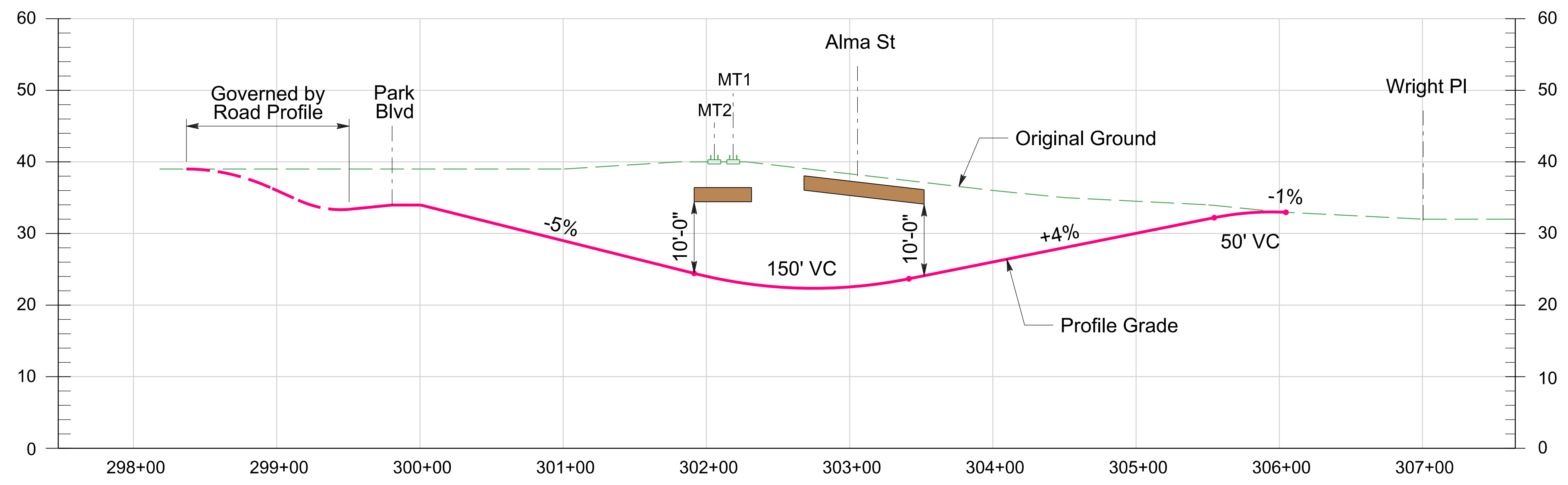




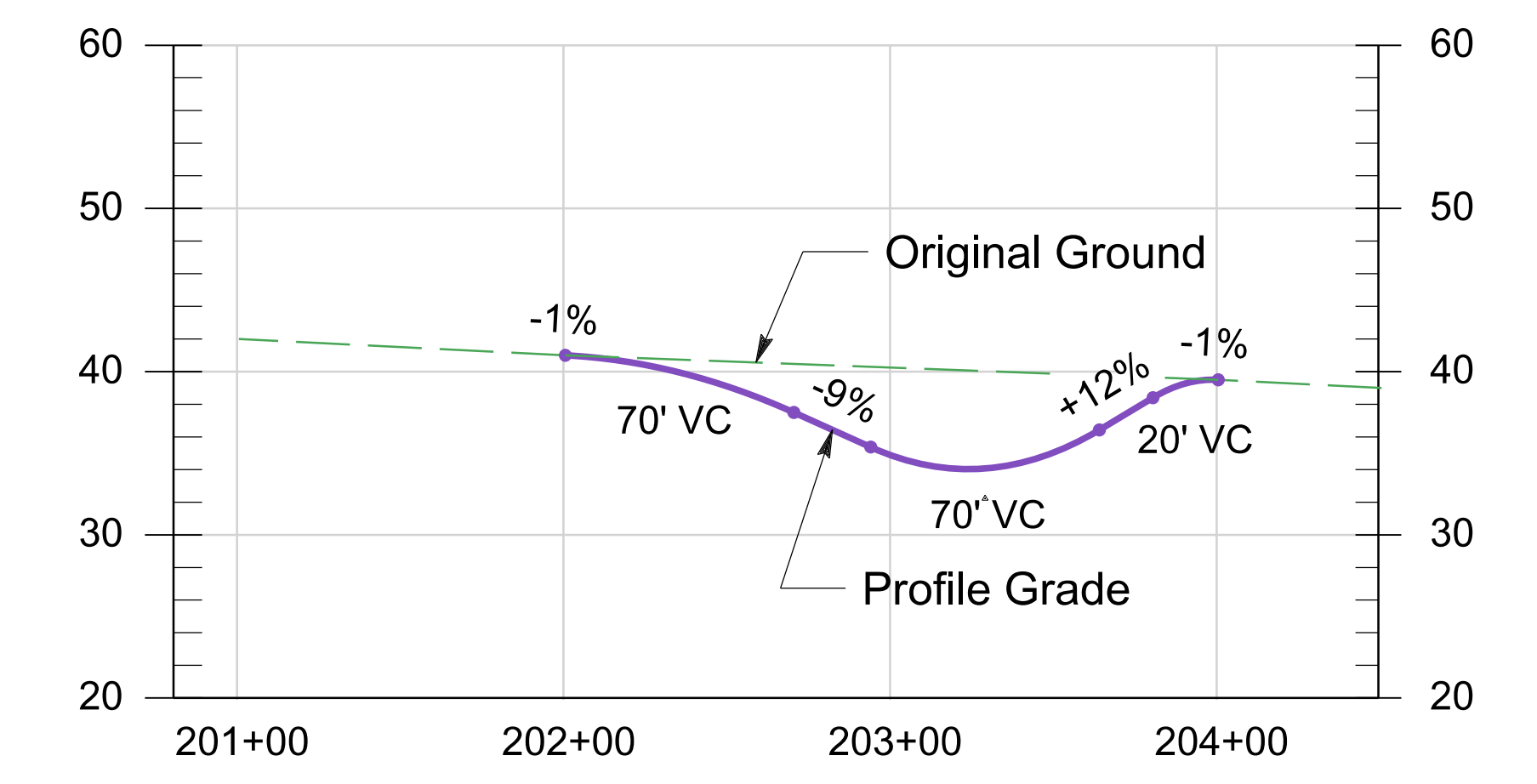
Charleston Rd Profile



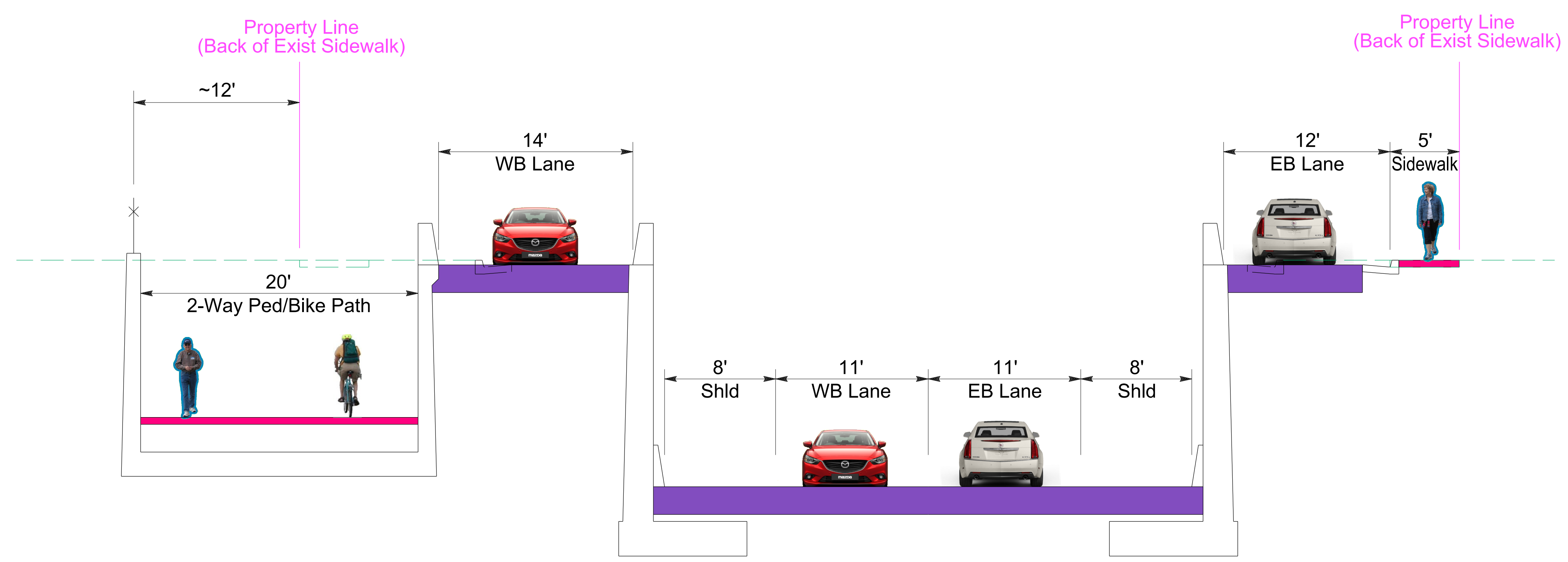
**Ramp Profile
EB Charleston Rd to SB Alma St**



Ped/Bike Profile from Park Blvd to Wright PI



Park Blvd Profile (North Side)



Typical Section - Charleston Rd Underpass

PRELIMINARY
FOR DISCUSSION PURPOSES ONLY

**Charleston Underpass
Profiles & Typical Section**

