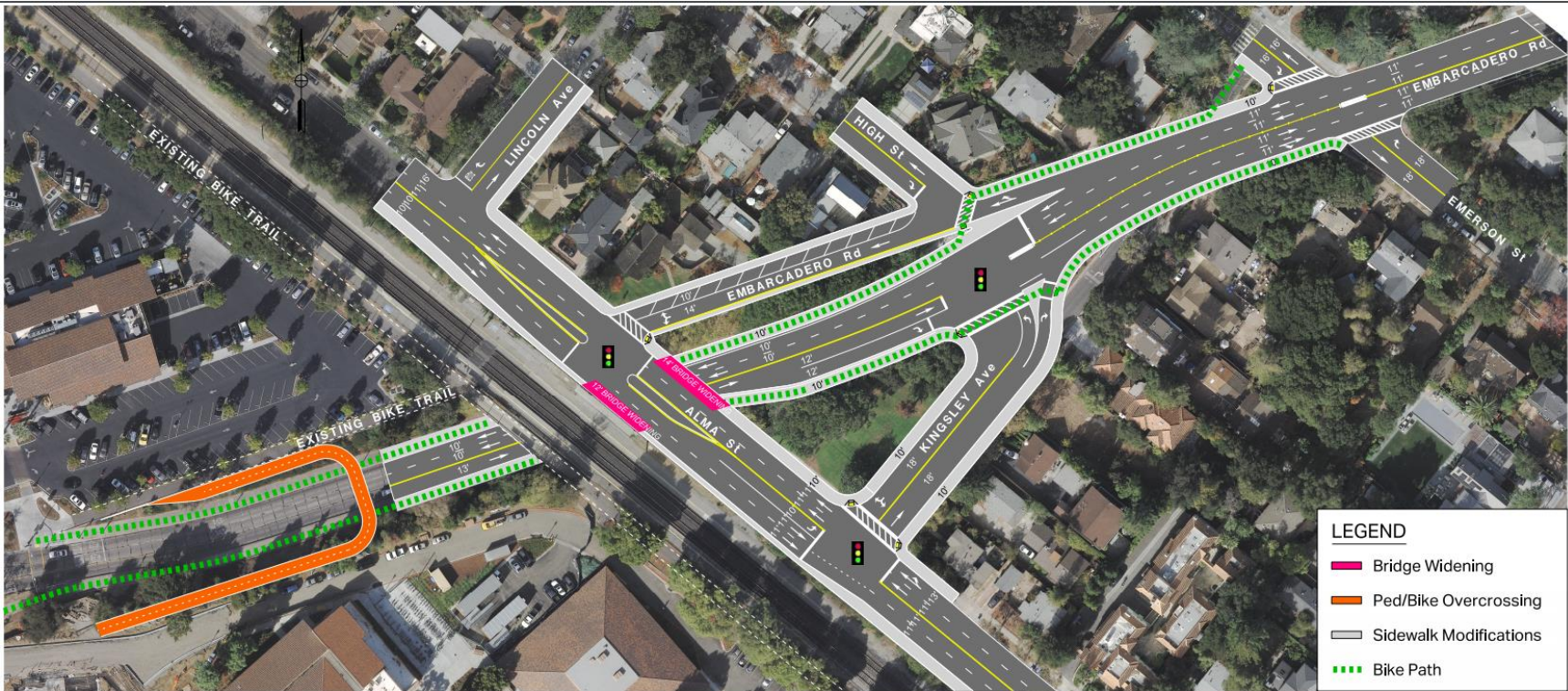
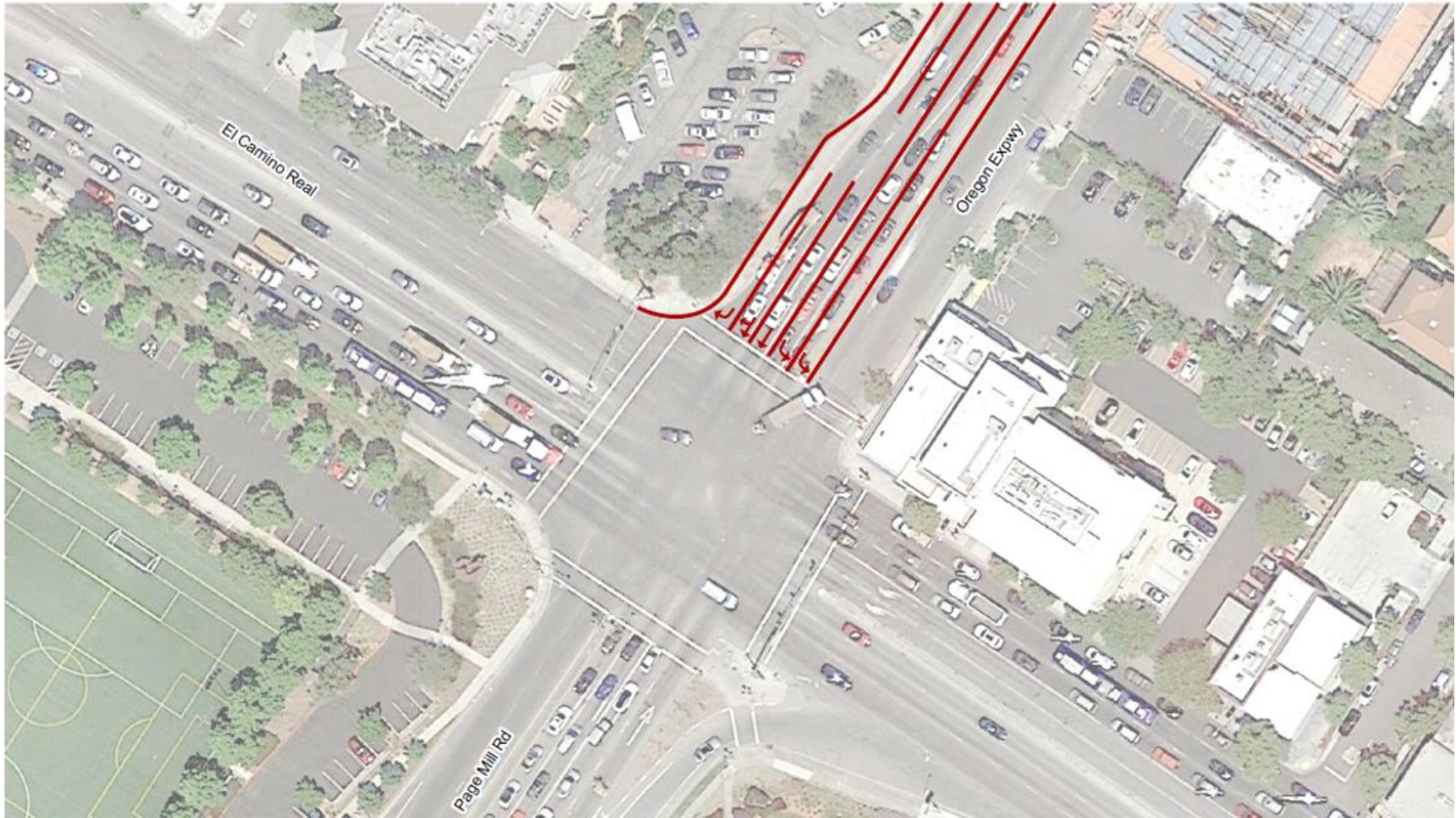


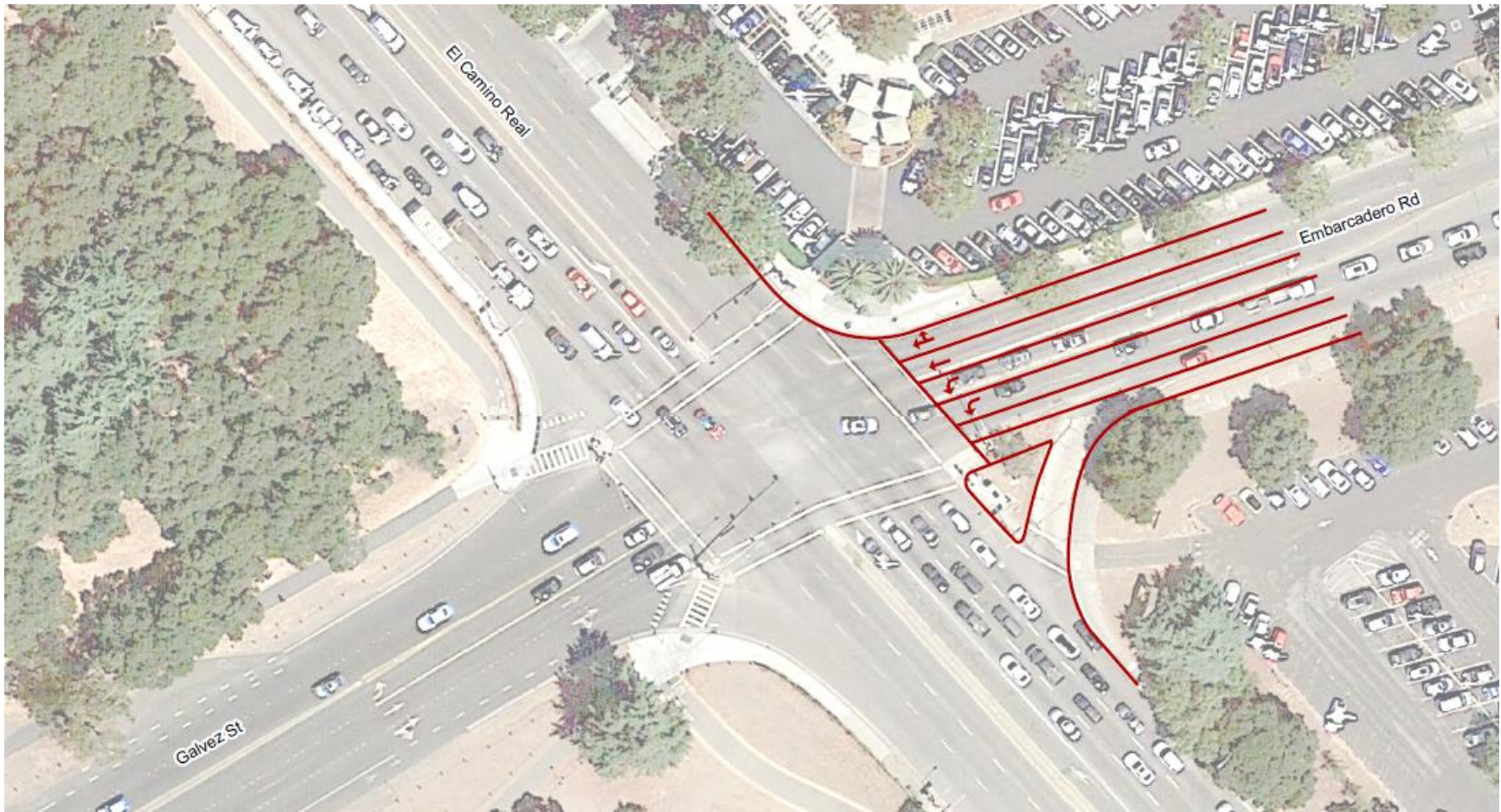
# Mitigation Measures for Churchill Avenue Closure



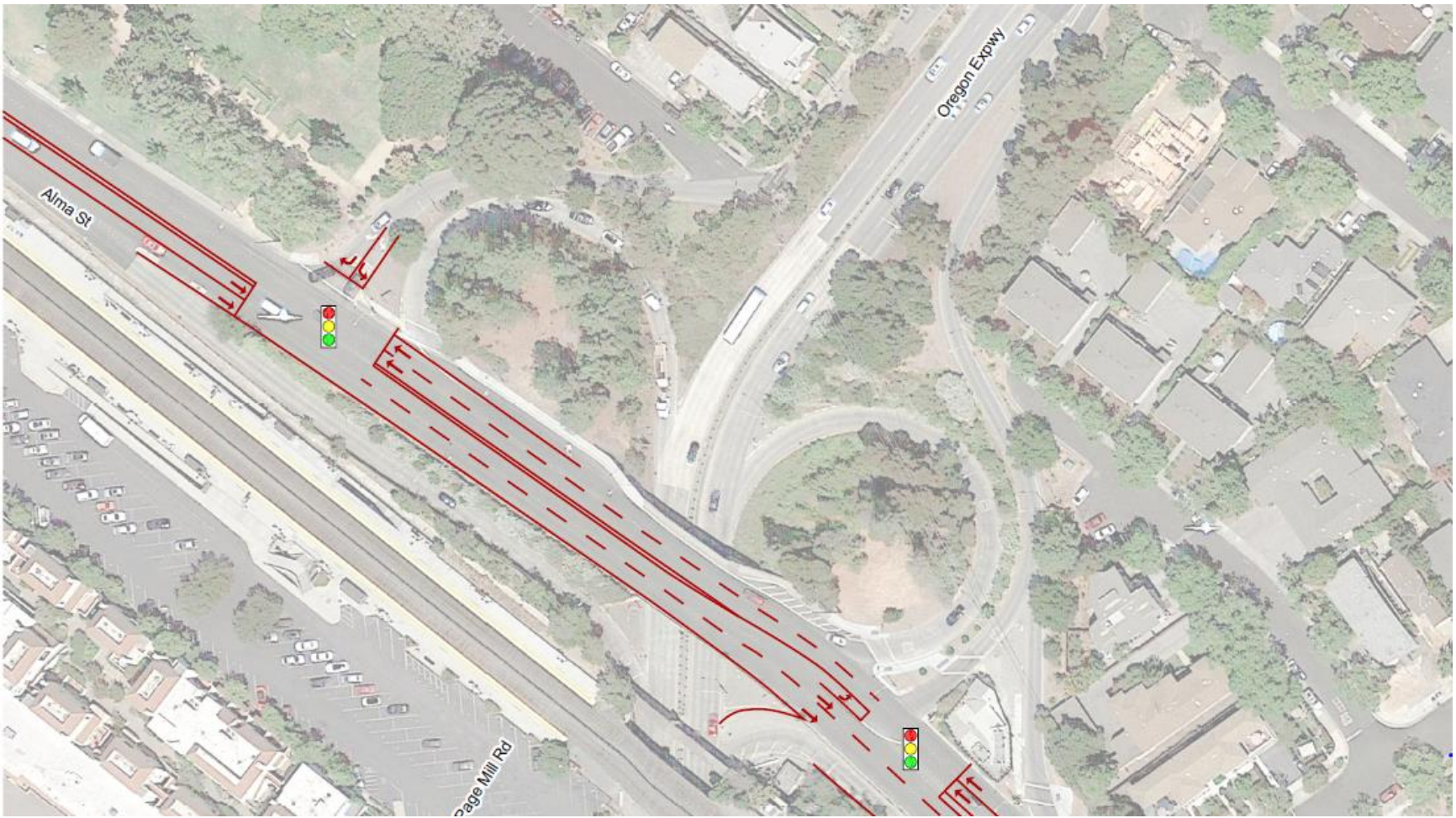
**Proposed Configuration for Mitigation at Embarcadero Road/Alma Street Intersection**



**Proposed Configuration for Mitigation at El Camino Real and Page Mill Road/Oregon Expressway**



**Proposed Configuration for Mitigation at El Camino Real and Embarcadero Road**



**Proposed Measures for Mitigation at Alma Street and Oregon Expressway**